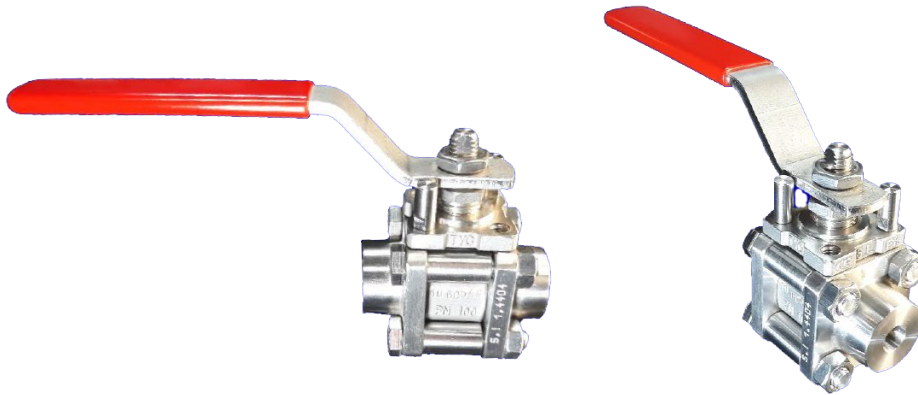


BRASS BALL VALVES – 3 PIECES

DN10 TO DN100 – FX15



GENERAL DESCRIPTION

Nominal Diameter:

DN10 to DN100, with full port or reduced port. Bulk conforms to EN 558.

Application field:

all gas and liquid of chemical industry, pharmaceutical industry, food industry and from energy industry.

Material:

FX15 range is commonly realized with steel 1.0619 or in stainless steel 1.4404. Stainless still should be choose in corrosive environment. In order to answer specifics requirements, we also manufacture our products in specifics materials such as stainless steel 1.4462 Duplex, Hastelloy C22 or food compliant materials.

Operation:

quarter-turn operation using a stainless steel lever.

Standard use temperature:

-50°C +200°C for stainless steel valves.

0°C + 175°C for steel valves.

Base of the stem conforms to the norm DIN ISO 5211 to adapt a pneumatic actuator.

Antiblow-out stem:

design of our stem guarantee his staying in position in any circunstances (internal over pressure, maintaining of the lever).

Our valves are manufactured in conformity with the directive 2014/68. Material certificates delivered with the products.

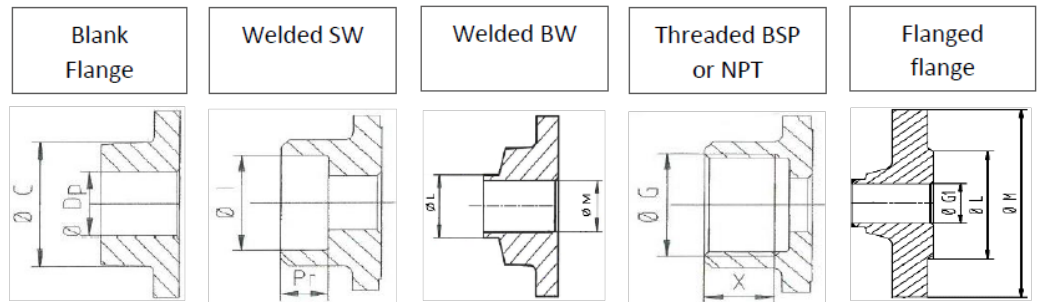
CONNECTION (ENDS)

Our FX15 valves can be realized with two different classes of end:

- Fixed ends: the ends are joined to the body and cannot be moved.
- Rotating ends: the design of the ends allows it to turn on itself. Ideal for threaded and welding ends.

AVAILABLE CONNECTION

- Blank flange
- Welded SW
- Welded BW
- Threaded BSP
- Threaded NPT
- Flanged flange



TYPE	BLANK FLANGE		WELDED SW		WELDED BW		THREADED BSP		THREADED NPT		FLANGED FLANGE			
	DN	C	Dp	I	Pr	L	EP	G	X	G	X	G	L	M
10	28	10	17,75	9,5	17,1	1,65	3/8"	11,5	3/8"	10	-	-	-	-
15	32,5	14	21,6	9,5	21,3	2	1/2"	15	1/2"	13,5	14	45	95	
20	39	18	27,2	11	26,9	2,3	3/4"	16,5	3/4"	14	18	58	105	
25	48	25	34	12,5	33,7	2,6	1"	19	1"	17,5	25	68	115	
32	56	30	42,8	14,5	42,4	2,6	1 1/4"	21,5	1 1/4"	18	30	78	140	
40	69	40	48,8	16	48,3	2,6	1 1/2"	21,5	1 1/2"	18,5	40	88	150	
50	85	50	60,8	17,5	60,3	2,9	2"	26	2"	19,5	50	102	165	
65	107	65	76,6	19	76,1	2,9	2 1/2"	30,5	2 1/2"	29	65	122	185	
80	120	80	89,5	20,5	88,9	3,2	3"	33,5	3"	30,5	76	138	200	
100	171	100	114,9	20,5	114,3	3,6	4"	39,5	4"	33	100	158	235	

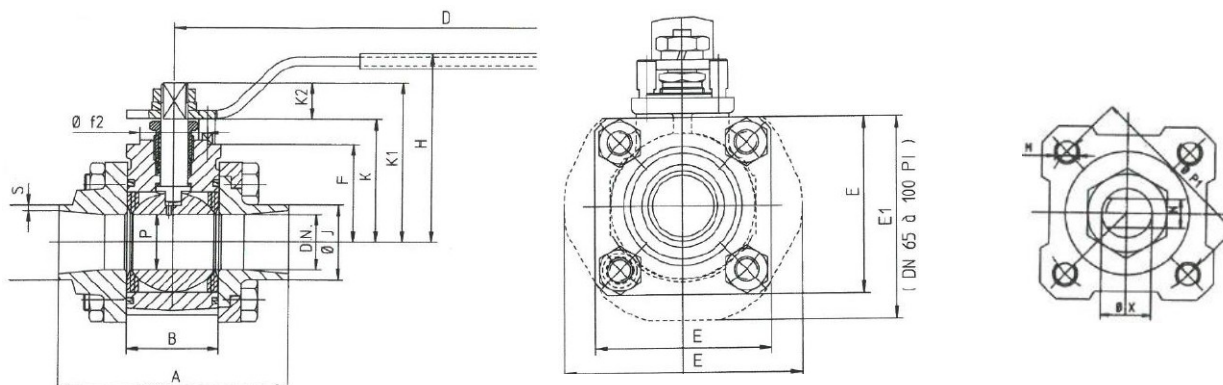
DETAILS OF MATERIALS

Materials detailed below are the materials commonly used in our valves. Depending of your specific needs, we can propose you alternative material for some parts of the product.

ELEMENT	MATERIAL	ELEMENT	MATERIAL
BODY	1.4404/1.0619	CABLE GLAND GARNISH	1.4404
FLANGE	1.4404/1.0619	BODY SEAL	PTFE
BALL	1.4404	BODY SCREW TH+NUT HM	A2 70 + 1.4307
SEATS	PTFE+25% GLASS	BODY SPACER	1.4307
FRICTION WASHER	PTFE	LEVER STOPPER	1.4307
STEM	1.4404	LEVER	1.4301
GLAND FLANGE	1.4404	STUD	1.4301
STEM PACKING	PTFE	ANTISTATIC SPRING	1.4401
CABLE GLAND GARNISH	PTFE		

The operating torques are higher average torques. Starting torques are taking into account and are understood in a state of absence of pressure and vary according to the fluid, the temperature, the pressure and the frequency of use.

GENERAL DIMENSIONS



DN	A	B	D	E	E1	F	H	J	S	K	P	ISO	P1	K1	K2	F2	N	X
10	66	22	155	45	-	28,5	69	17,2	1,8	39,6	11	F03	36	57	17,4	25	7	10,1
15	73	25	155	50	-	31	72	21,3	2	42,1	14	F03	36	59,5	17,4	25	7	10,1
20	87	31	205	62	-	38,5	81	26,9	2,3	51,6	17	F04	42	69	17,4	30	7	12,1
25	103	41	205	72	-	44	85	33,7	2,6	55,5	25	F04	42	71,8	16,3	30	7	12,1
32	112	48	213	80	-	50,5	95	42,4	2,6	64	30	F05	50	80,5	16,5	35	7	13,8
40	128	60	255	98	-	63	107	48,3	2,6	76,5	40	F05	50	96,5	20	35	7	15,8
50	155	75	284	110	-	60,5	129	60,3	2,9	90,5	50	F07	70	118,5	28	55	12	19,75
65	182	100	550	184	166	82,5	195	76,1	2,9	125	65	F010	102	145	20	70	16	23,75
80	214	107,5	550	205	181	86	200	88,9	3,2	130	76	F010	102	150	20	70	16	23,75
100	245	134,5	550	205	221	108	221	114,3	3,6	151	101	F010	102	170,5	20	70	16	23,75

DN/PN COUPLES AND BREAKAWAY TORQUE

DN	PRESSURE / BAR		BREAKAWAY TORQUE NM		
	PN-fixed ends	PN-rotating ends	Full PTFE	PTFE 25%V	Maximum breakaway
15	100	40	6	7	40
20	100	40	10	11	60
25	100	40	15	17	60
32	64	25	20	24	90
40	64	25	30	35	130
50	64	25	40	50	300
65	40	16	80	95	600
80	40	16	105	130	600
100	25	16	180	210	600